

Autumn Bells

(orchestrated accompaniment
has a 2 measure count-in...
since there is a split measure, the
2 measure count-in will be 5 beats)

CREATED BY
MAYRON COLE

©Mayron Cole

Crisply

Pre-1 1 2 3 4 5

6 7 8 9 10 11

12 13 14 15 16 17

18 19 20 21 22 23

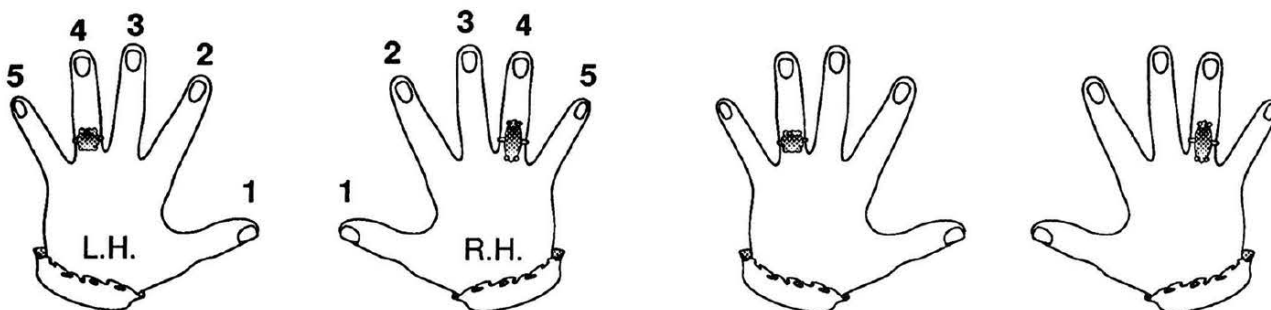
24 25 26 27 28 29

30 31 32 33 34 35

Blue Skies and Gray Skies & Country Morning

Introducing Fingering... Fingering is Easy!

Your thumbs are #1 on both hands. Look at the fingering example below. Then, write the correct fingering on the second pair of hands:



There will be many E-flats in Blue Skies & Gray Skies. A flat sign, \flat , tells you to go _____ (forward or backward) to the very next key (either black or white).

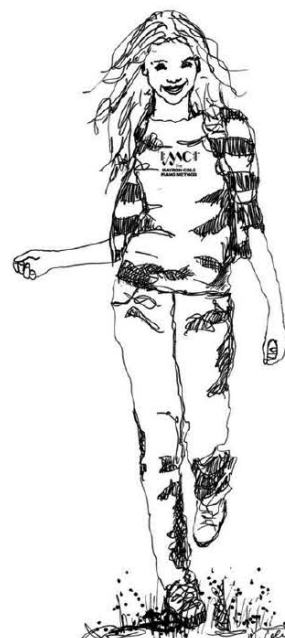
Ritardando is an Italian word that means to “gradually play slower.” *Ritardando* may be abbreviated as “*rit.*”

This, fermata , is a _____ (pedal mark or fermata). It means to hold the key down a little longer.

A good pianist always counts the rhythm _____ (correctly or incorrectly) as he/she plays the assigned music!

Middle C is a floater note because it floats between the two _____ (lines or staves).

Always sit with your nose in front of _____ (Middle F or Middle C).



Blue Skies and Gray Skies

©Mayron Cole

(orchestrated accompaniment has a 2 measure count-in)

Tempo di Weather Report

Measures 1-5 of the piece. The key signature is one flat (Bb) and the time signature is 3/4. The melody is in the treble clef, and the bass line is in the bass clef. Fingerings are indicated by numbers 1-5. Measure 1 has a finger number 1 in the bass and 2, 4 in the treble. Measure 2 has a finger number 1 in the bass and 4 in the treble. Measure 3 has a finger number 1 in the bass and 1 in the treble. Measure 4 has a finger number 1 in the bass and 3 in the treble. Measure 5 has a finger number 1 in the bass and 5 in the treble.

Measures 6-10 of the piece. The melody continues in the treble clef, and the bass line continues in the bass clef. Fingerings are indicated by numbers 1-5. Measure 6 has a finger number 1 in the bass and 1 in the treble. Measure 7 has a finger number 1 in the bass and 2 in the treble. Measure 8 has a finger number 1 in the bass and 3 in the treble. Measure 9 has a finger number 1 in the bass and 4 in the treble. Measure 10 has a finger number 1 in the bass and 5 in the treble.

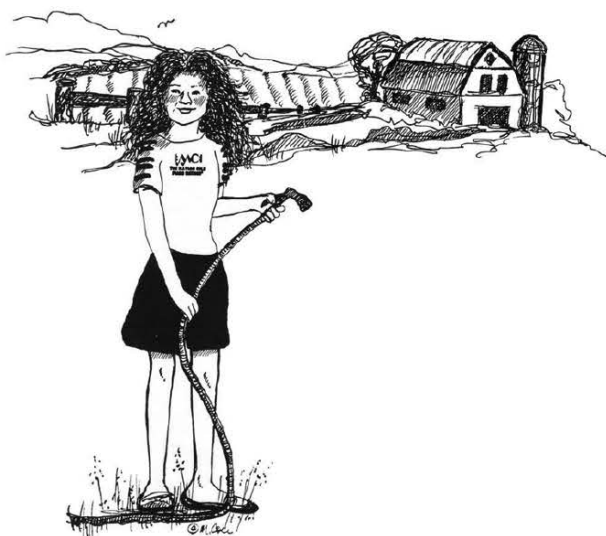
Measures 11-16 of the piece. The melody continues in the treble clef, and the bass line continues in the bass clef. Fingerings are indicated by numbers 1-5. Measure 11 has a finger number 1 in the bass and 1 in the treble. Measure 12 has a finger number 1 in the bass and 2 in the treble. Measure 13 has a finger number 1 in the bass and 3 in the treble. Measure 14 has a finger number 1 in the bass and 4 in the treble. Measure 15 has a finger number 1 in the bass and 5 in the treble. Measure 16 has a finger number 1 in the bass and 5 in the treble. The word *ritardando* is written below measure 15.

Country Morning

© Mayron Cole

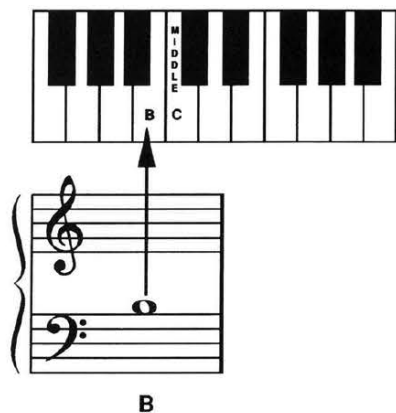
(orchestrated accompaniment has a 2 measure count-in...
since there is a split measure, the 2 measure count-in will be 5 beats)

Happy!



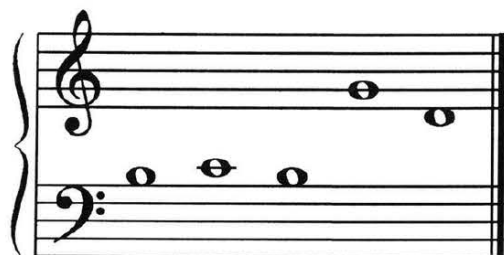
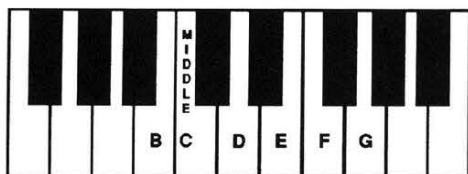
Introducing B

Introducing B...
The space note above
the low staff is **B**.



B

Write the letter name of these
notes on the blanks below.
Then, draw a line from each
note to its corresponding
key on the keyboard.



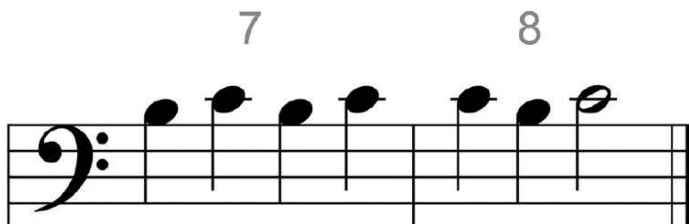
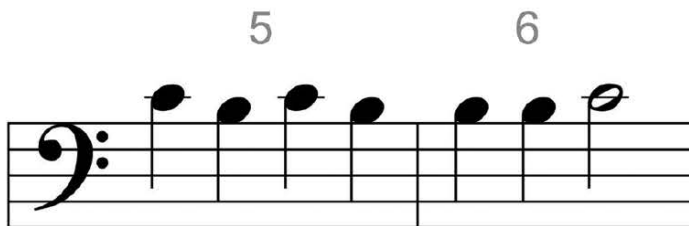
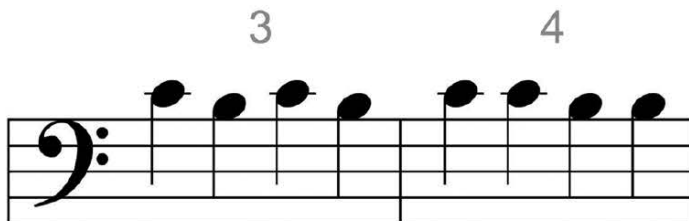
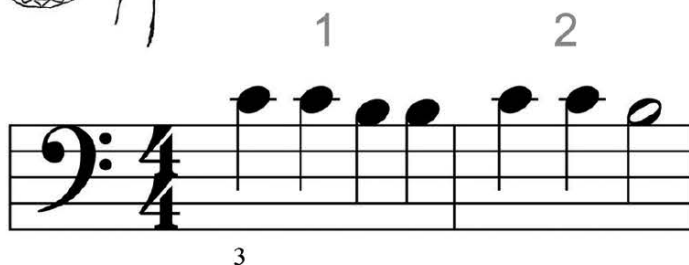
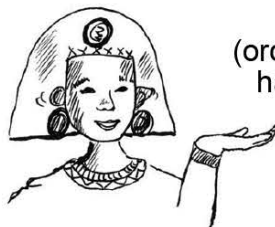
LETTER NAME: _____

Back to B.C.

(LEFT-HAND MUSIC)

(orchestrated accompaniment
has a 2 measure count-in)

© Mayron Cole



Skip to My Lou

The TOP NUMBER in the time signature tells you how many _____ (rests or beats) will be in each measure.

The BOTTOM NUMBER in the time signature tells you what type of note receives _____ (one beat or four beats).

The "4" stands for the quarter note or $\frac{1}{4}$ note, so in this time signature, the quarter note will receive one beat.

→ **2**
→ **4**



Look at the time signatures below. Be sure to look at the top number to see how many beats will be in each measure. Then, draw bar-lines to divide the notes correctly into measures:



DO YOU KNOW?

Place the correct answer in the blank. The time signature for this exercise is $\frac{4}{4}$.

- A. _____
- B. _____
- C. _____
- D. _____
- E. _____
- F. _____
- G. _____
- H. _____

- 1. QUARTER NOTE (count: 1)
- 2. HALF NOTE (count: 1 - 2)
- 3. DOTTED HALF NOTE (count 1 - 2 - 3)
- 4. DOUBLE BAR LINE (The End)
- 5. SHARP SIGN (go forward to the very next key)
- 6. FLAT SIGN (go backward to the very next key)
- 7. TWO EIGHTH NOTES (count: 1 +)
- 8. WHOLE NOTE (count: 1 - 2 - 3 - 4)



Skip to My Lou

(orchestrated accompaniment
has a 2 measure count-in)

Folk Song
©arranged by
Mayron Cole

2
Choose your part - ner, skip to my Lou! Choose your

1 2 3 4 5

2

part - ner, skip to my Lou! Choose your part - ner,

6 7 8 9 10

skip to my Lou! Skip to my Lou, my dar - ling!

11 12 13 14 15 16